

Animals including humans- Year 4- Kapow unit- Digestion and food

Previous learning

Identify that animals, including humans, need the right types and amount of nutrition, and that they cannot make their own food, they get nutrition from what they eat.

Identify that humans and some other animals have skeletons and muscles for support, protection and movement.

Key Vocabulary for Year 4	
Mouth	Carnivore
Tongue	Canine
Teeth	Incisor
Oesophagus	Molar
Stomach	
Small intestine	
Large intestine	
Digestive system	
Herbivore	

Previous vocabulary

Movement, muscles, bones, skull, nutrition, skeletons

Useful links

<https://www.stem.org.uk/resources/community/collecion/12365/year-4-animals-including-humans>

<https://www.hamilton-trust.org.uk/science/year-4-science/animals-including-humans-excuse-me-are-these-your-teeth/>

https://www.outstandingscience.co.uk/index.php?action=view_page&page=view_unit&unit=4b

Key scientists you could look at...

Alfred Russel Wallace

Scientific skills

Working scientifically	Questioning and enquiry	Observing and measuring	Investigating	Recording	Grouping and classifying
To use practical scientific method, processes and skills	Ask relevant questions and use different types of scientific enquiry to answer them	Make systematic and careful observations, take accurate measurements using standard and non-standard units and a range of equipment, including thermometers and data loggers. Begin to look for naturally occurring patterns and relationships and decide what data to collect to identify them. Help make decisions about what observations and equipment they will need to use.	Set up simple practical experiments, comparative and fair tests. Recognise when a simple fair test is necessary and help to decide how to set it up. Be able to think of more than one variable factor.	Gather, record, classify and present data in a variety of ways to answer a question. Record simple findings using scientific vocabulary, drawings, labelled diagrams, keys, bar charts and tables. Report on findings including oral and written explanations, displays or presentation of results and conclusions. Use notes, simple tables and standard units to decide how to record and analyse data.	Identify differences, similarities and changes related to scientific ideas and processes. Talk about criteria for grouping, sorting and classifying and use simple keys. Compare and group according to behaviour or properties, based on testing.

Experiment and activity ideas

Create own digestive system	Investigate teeth and their functions- teeth model	Investigate food chains	Investigate teeth using crackers, crunching, grinding	Tooth decay experiment- what causes tooth decay?
-----------------------------	--	-------------------------	---	--

Knowledge- objectives

Describe the simple functions of the basic parts of the digestive system in humans

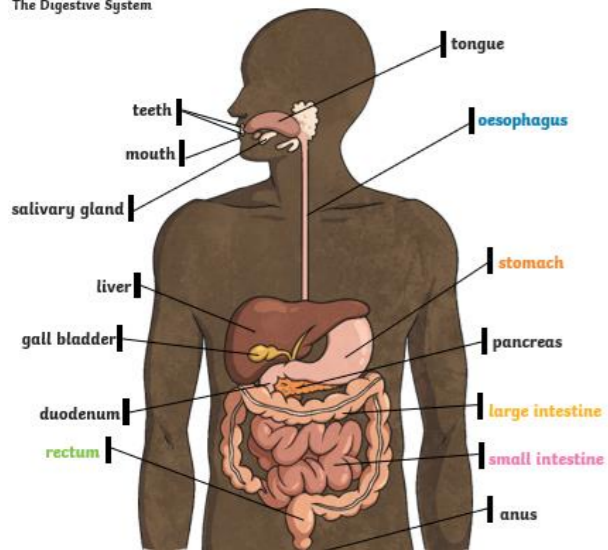
Identify the different types of teeth in humans and their simple functions

Construct and interpret a variety of food chains, identifying producers, predators and prey.

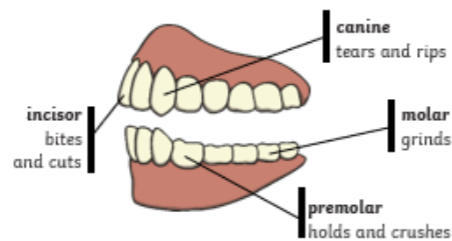
Resources in school

Human body, x rays, stop watches, magnifying glasses, bug finders, stethoscopes, height measure, teeth model

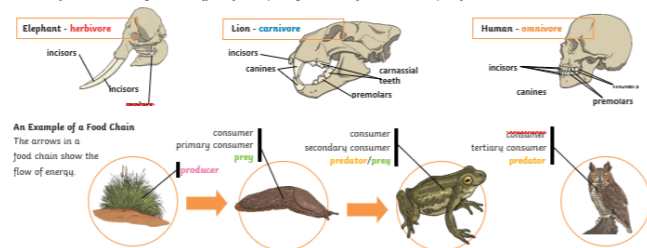
The Digestive System



Human Teeth and Their Functions



The teeth of an animal are designed to eat different foods depending on the diet of the animal. Examples of a herbivore, a carnivore and an omnivore skull.



To help prevent tooth decay:

- limit sugary food and drink;
- brush teeth at least twice daily using a fluoride toothpaste;
- visit your dentist regularly.

